

DISCLAIMER

THIS DIAGRAM IS INTENDED ONLY AS A GUIDE. BRUCE J. SPIEWAK DOES NOT WARRANT THAT THIS DIAGRAM WILL ENSURE CODE COMPLIANCE IN ANY SPECIFIC INSTALLATION

BRUCE J. SPIEWAK A.I.A.
 CONSULTING ARCHITECT L.L.C.
 375 MORGAN LANE UNIT 405
 WEST HAVEN, CT 06516
 PH. (203) 931-9945
 FAX (203) 932-2355

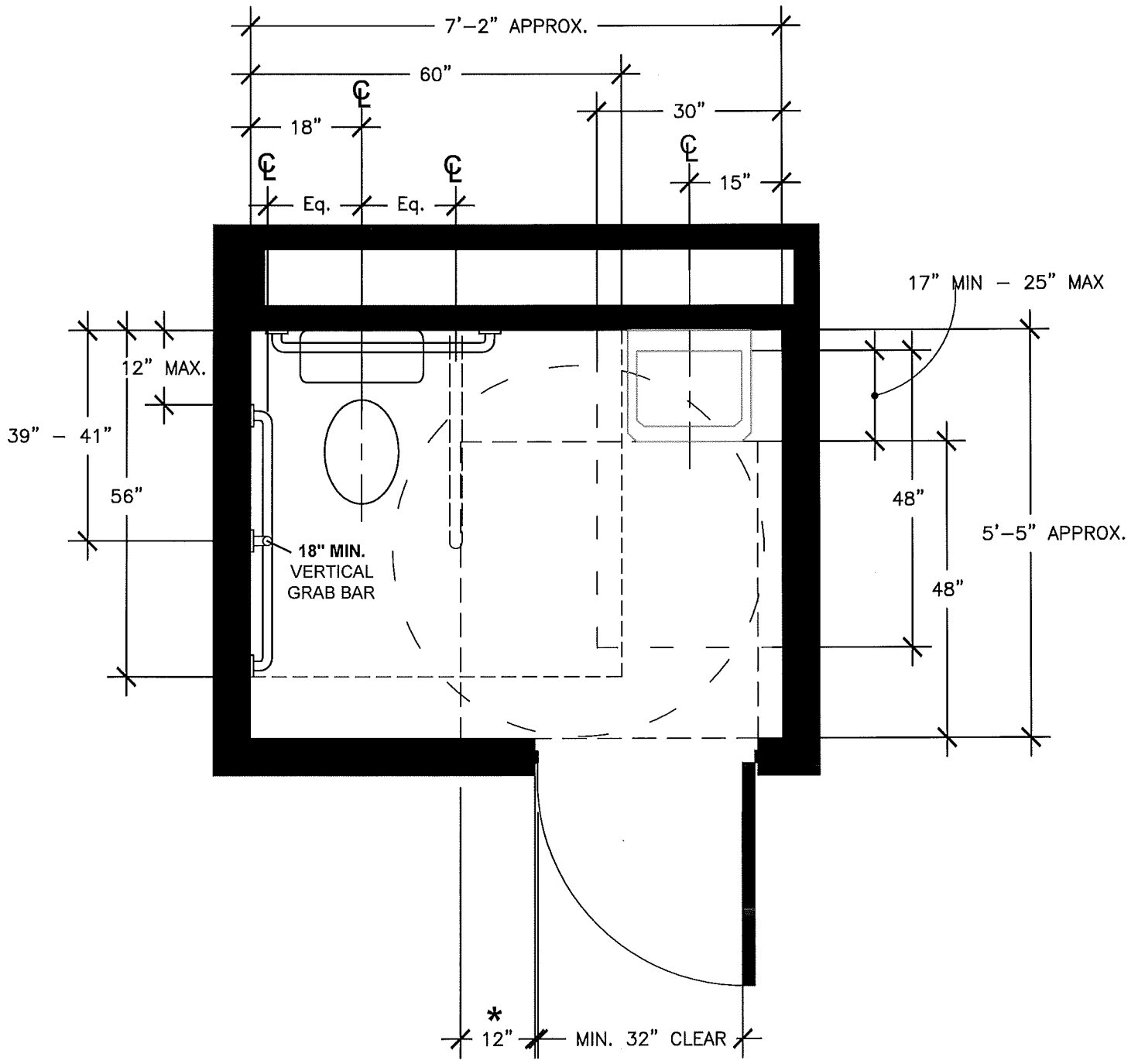
PLAN: ICC/ANSI A117.1 - 2003
 COMMERCIAL ACCESSIBLE
 RESTROOM

DRAWN BY: C BARAN

DRAWING: SK - 3.1

SCALE: 1/2" = 1'-0"

SEPTEMBER 28,
 2009



* - If BOTH Closer and Latch are provided

DISCLAIMER

THIS DIAGRAM IS INTENDED ONLY AS A GUIDE. BRUCE J. SPIEWAK DOES NOT WARRANT THAT THIS DIAGRAM WILL ENSURE CODE COMPLIANCE IN ANY SPECIFIC INSTALLATION

BRUCE J. SPIEWAK A.I.A.
CONSULTING ARCHITECT L.L.C.
 375 MORGAN LANE UNIT 405
 WEST HAVEN, CT 06516
 PH. (203) 931-9945
 FAX (203) 932-2355

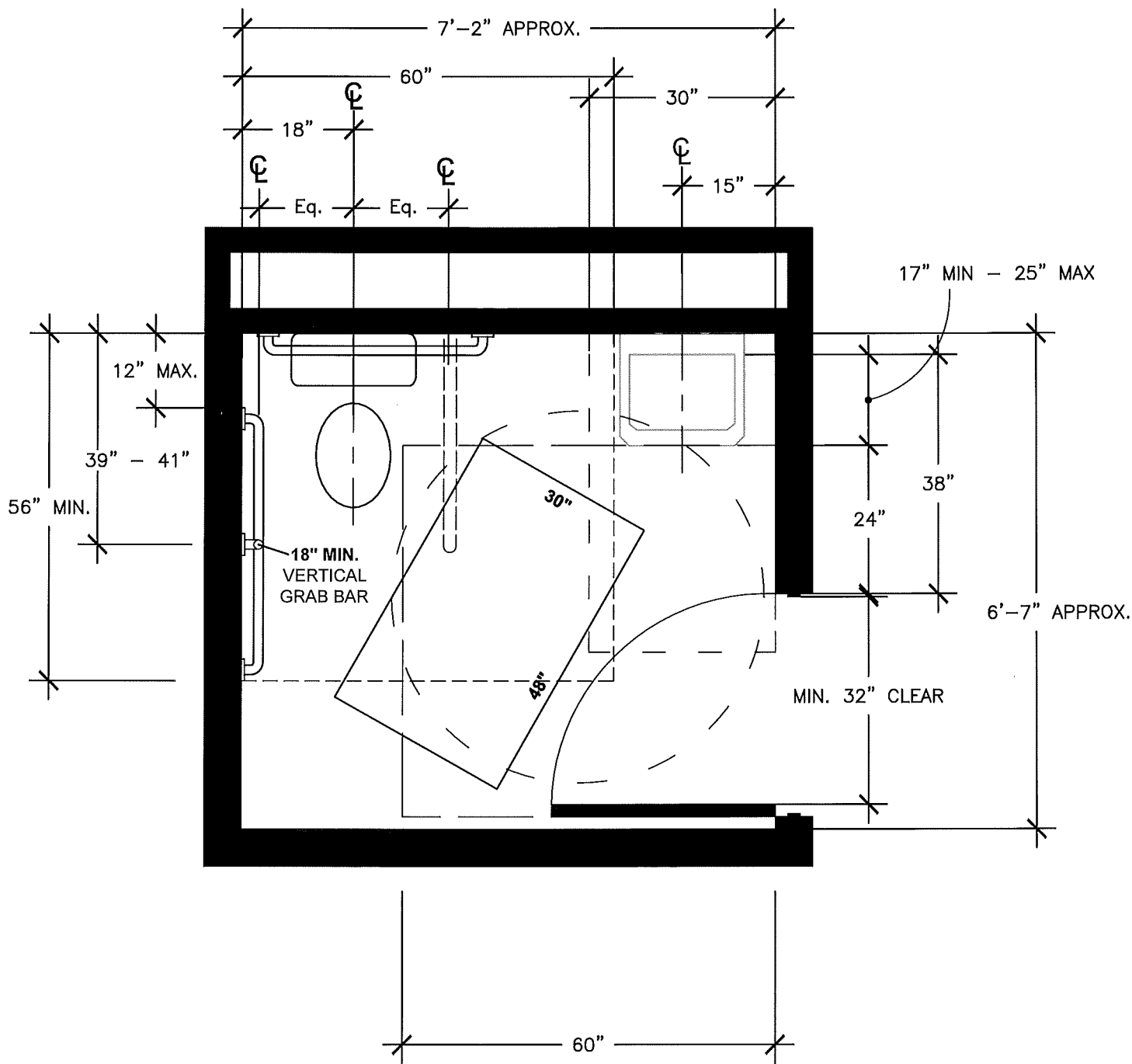
PLAN: ICC/ANSI A117.1 - 2003
COMMERCIAL ACCESSIBLE
RESTROOM

DRAWN BY: C BARAN

DRAWING: SK - 3.2

SCALE: 1/2" = 1'-0"

SEPTEMBER 29,
 2009



DISCLAIMER

THIS DIAGRAM IS INTENDED ONLY AS A GUIDE. BRUCE J. SPIEWAK DOES NOT WARRANT THAT THIS DIAGRAM WILL ENSURE CODE COMPLIANCE IN ANY SPECIFIC INSTALLATION

BRUCE J. SPIEWAK A.I.A.
CONSULTING ARCHITECT L.L.C.
 375 MORGAN LANE UNIT 405
 WEST HAVEN, CT 06516
 PH. (203) 931-9945
 FAX (203) 932-2355

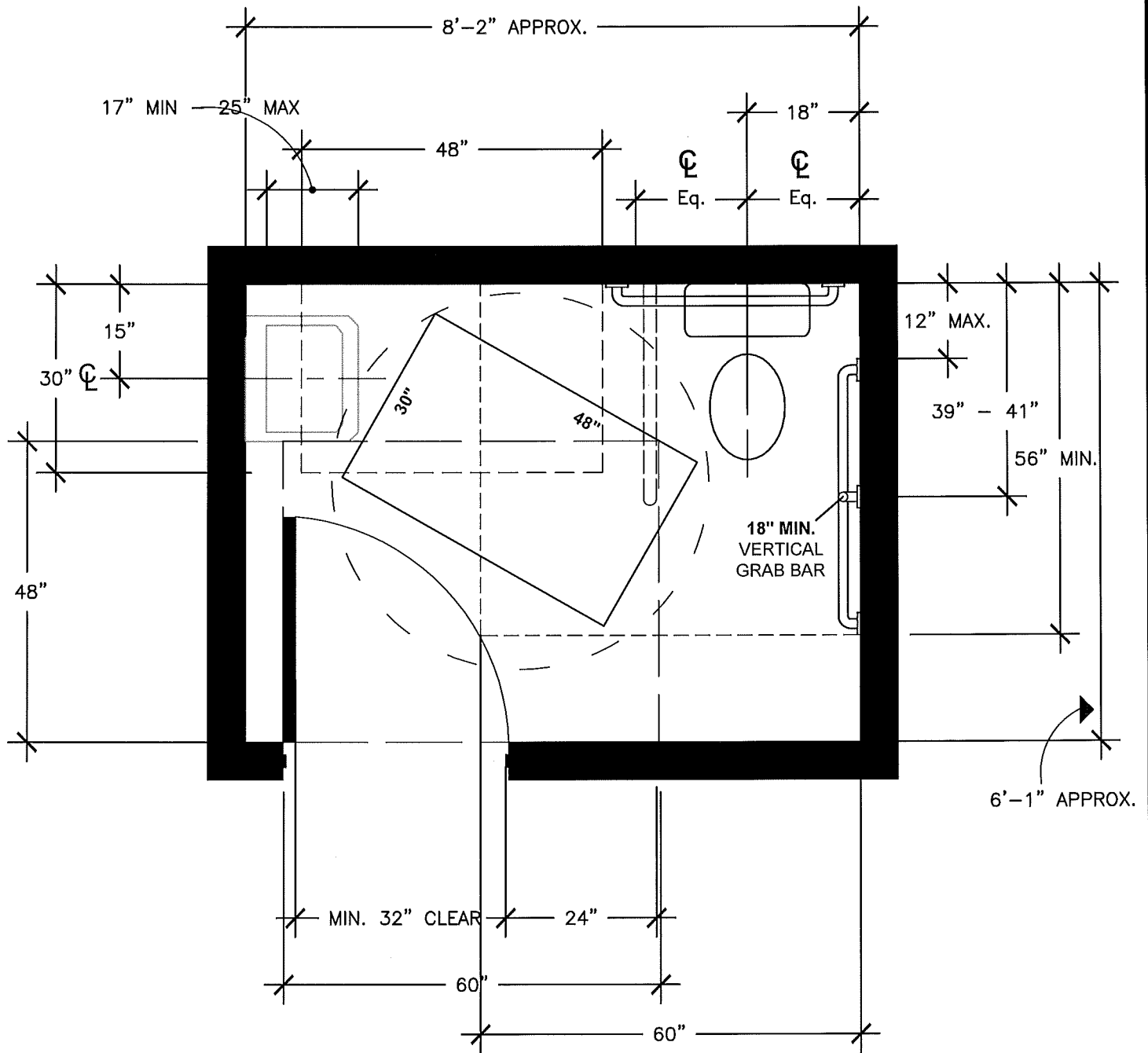
PLAN: ICC/ANSI A117.1 - 2003
COMMERCIAL ACCESSIBLE
RESTROOM

DRAWN BY: C BARAN

DRAWING: SK - 3.3

SCALE: 1/2" = 1'-0"

AUGUST 9, 2011



DISCLAIMER

THIS DIAGRAM IS INTENDED ONLY AS A GUIDE. BRUCE J. SPIEWAK DOES NOT WARRANT THAT THIS DIAGRAM WILL ENSURE CODE COMPLIANCE IN ANY SPECIFIC INSTALLATION

BRUCE J. SPIEWAK A.I.A.
CONSULTING ARCHITECT L.L.C.
 375 MORGAN LANE UNIT 405
 WEST HAVEN, CT 06516
 PH. (203) 931-9945
 FAX (203) 932-2355

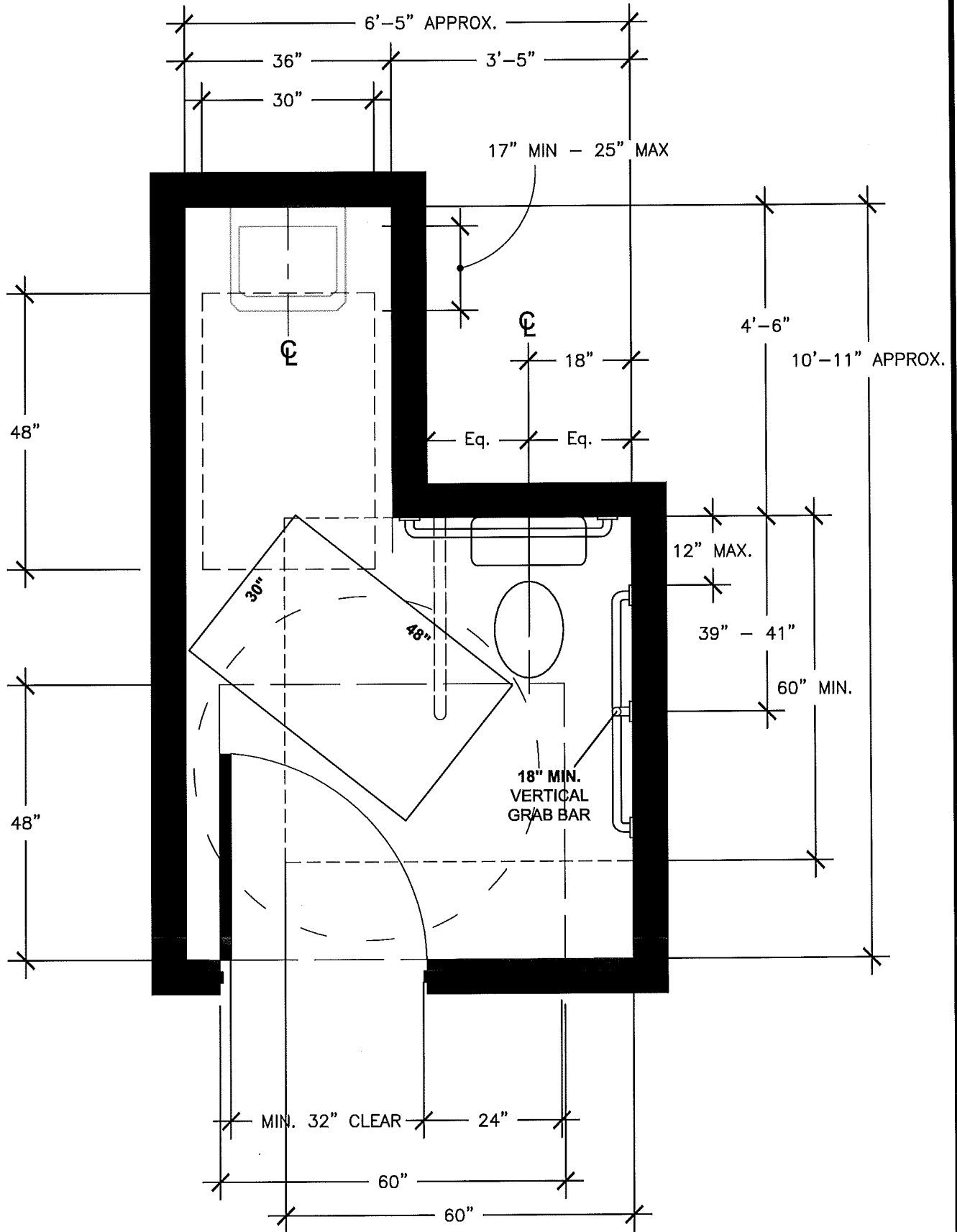
PLAN: ICC/ANSI A117.1 - 2003
COMMERCIAL ACCESSIBLE
RESTROOM

DRAWN BY: C BARAN

DRAWING: SK - 3.4

SCALE: 1/2" = 1'-0"

SEPTEMBER 28,
 2009



DISCLAIMER

THIS DIAGRAM IS INTENDED ONLY AS A GUIDE. BRUCE J. SPIEWAK DOES NOT WARRANT THAT THIS DIAGRAM WILL ENSURE CODE COMPLIANCE IN ANY SPECIFIC INSTALLATION

BRUCE J. SPIEWAK A.I.A.
CONSULTING ARCHITECT L.L.C.
 375 MORGAN LANE UNIT 405
 WEST HAVEN, CT 06516
 PH. (203) 931-9945
 FAX (203) 932-2355

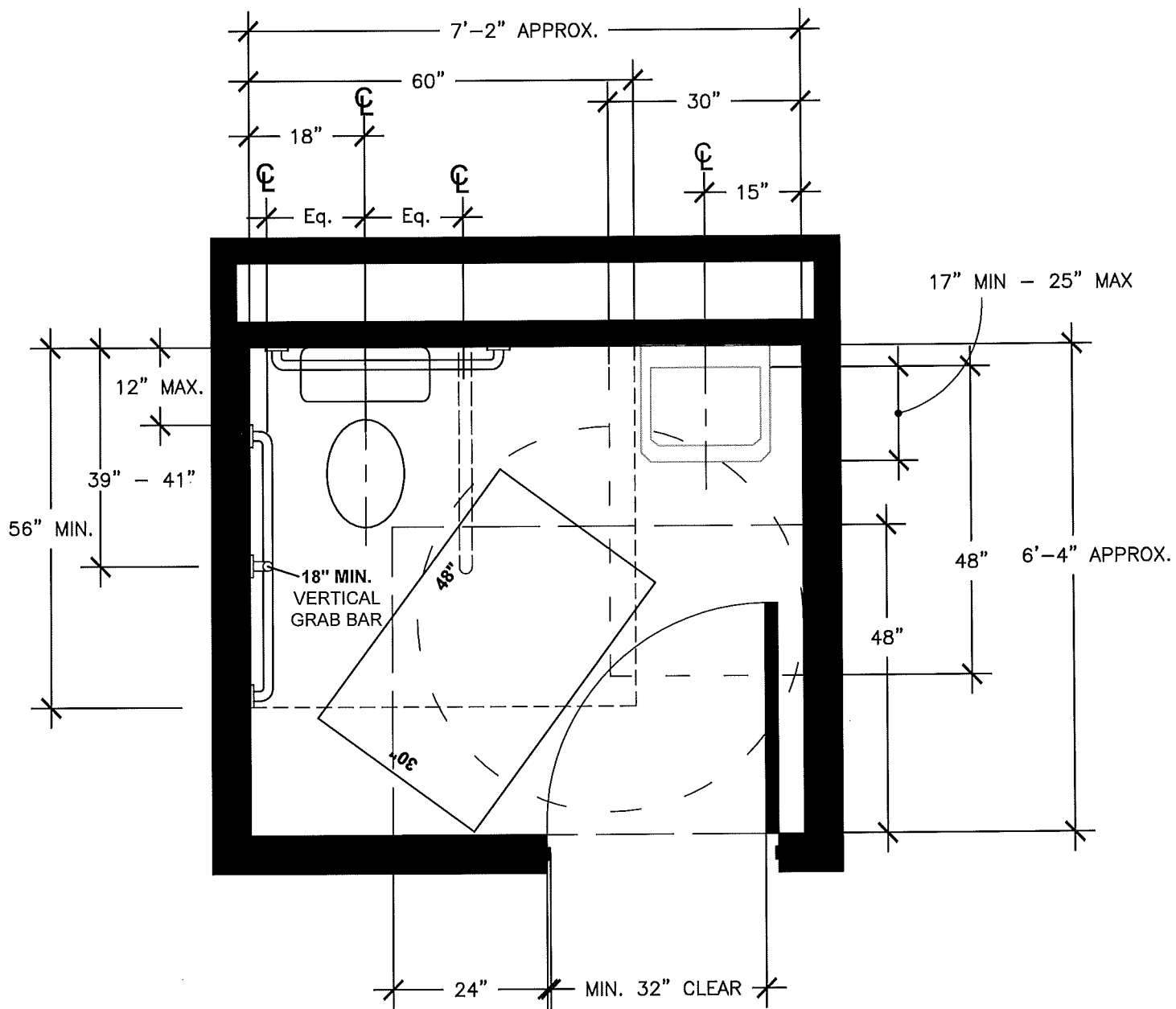
PLAN: ICC/ANSI A117.1 - 2003
COMMERCIAL ACCESSIBLE
RESTROOM

DRAWN BY: C BARAN

DRAWING: SK - 3.5

SCALE: 1/2" = 1'-0"

SEPTEMBER 28,
 2009



DISCLAIMER

THIS DIAGRAM IS INTENDED ONLY AS A GUIDE. BRUCE J. SPIEWAK DOES NOT WARRANT THAT THIS DIAGRAM WILL ENSURE CODE COMPLIANCE IN ANY SPECIFIC INSTALLATION

BRUCE J. SPIEWAK A.I.A.
CONSULTING ARCHITECT L.L.C.
 375 MORGAN LANE UNIT 405
 WEST HAVEN, CT 06516
 PH. (203) 931-9945
 FAX (203) 932-2355

PLAN: ICC/ANSI A117.1 - 2003
COMMERCIAL ACCESSIBLE
RESTROOM

DRAWN BY: C BARAN

DRAWING: SK - 3.6

SCALE: 1/2" = 1'-0"

APRIL 8, 2013

SECTION 603.2.1 - A TURNING SPACE COMPLYING WITH SECTION 304 SHALL BE PROVIDED WITHIN THE ROOM.

SECTION 603.2.2 - CLEAR FLOOR SPACES, CLEARANCES AT FIXTURES, AND TURNING SPACES SHALL BE PERMITTED TO OVER LAP.

SECTION 603.2.3 - DOORS SHALL NOT SWING INTO THE CLEAR FLOOR SPACE OR CLEARANCE OF ANY FIXTURE

EXCEPTION: WHERE THE ROOM IS FOR INDIVIDUAL USE AND CLEAR FLOOR SPACE COMPLYING WITH SECTION 305.3 (30" x 48") IS PROVIDED WITHIN THE ROOM BEYOND THE ARC OF THE DOOR SWING.

SECTION 604.2 - THE WATER CLOSET SHALL BE LOCATED WITH A WALL OR PARTITION TO THE REAR AND TO ONE SIDE. THE CENTERLINE OF THE WATER CLOSET SHALL BE 16 INCHES MINIMUM TO 18 INCHES MAXIMUM FROM THE SIDE WALL OR PARTITION.

SECTION 604.3.1 - A CLEARANCE AROUND A WATER CLOSET 60 INCHES MINIMUM, MEASURED PERPENDICULAR FROM THE SIDE WALL, AND 56 INCHES MINIMUM, MEASURED PERPENDICULAR FROM THE REAR WALL, SHALL BE PROVIDED.

SECTION 604.3.2 - THE REQUIRED CLEARANCE AROUND THE WATER CLOSET SHALL BE PERMITTED TO OVERLAP THE WATER CLOSET, ASSOCIATED GRAB BARS, PAPER DISPENSERS, SANITARY NAPKIN RECEPTACLES, COAT HOOKS, SHELVES, ACCESSIBLE ROUTES, CLEAR FLOOR SPACE AT OTHER FIXTURES, AND THE TURNING SPACE. NO OTHER FIXTURES OR OBSTRUCTIONS SHALL BE WITHIN THE REQUIRED WATER CLOSET CLEARANCE.

SECTION 604.5 - GRAB BARS FOR WATER CLOSETS SHALL COMPLY WITH SECTION 609 AND SHALL BE PROVIDED IN ACCORDANCE WITH SECTIONS 604.5.1 AND 604.5.2. GRAB BARS SHALL BE PROVIDED ON THE REAR WALL AND ON THE SIDE WALL CLOSEST TO THE WATER CLOSET.

SECTION 604.5.1 - FIXED SIDE WALL GRAB BARS SHALL BE 42 INCHES MINIMUM IN LENGTH, LOCATED 12 INCHES MAXIMUM FROM THE REAR WALL AND EXTENDING 54 INCHES MINIMUM FROM THE REAR WALL. IN ADDITION, A VERTICAL GRAB BAR 18 INCHES MINIMUM IN LENGTH SHALL BE MOUNTED WITH THE BOTTOM OF THE BAR LOCATED BETWEEN 39 INCHES AND 41 INCHES ABOVE THE FLOOR, AND WITH THE CENTER LINE OF THE BAR LOCATED BETWEEN 39 INCHES AND 41 INCHES FROM THE REAR WALL.

SECTION 604.5.2 - THE REAR WALL GRAB BAR SHALL BE 36 INCHES MINIMUM IN LENGTH, AND EXTEND FROM THE CENTERLINE OF THE WATER CLOSET 12 INCHES MINIMUM ON THE SIDE CLOSEST TO THE WALL, AND 24 INCHES MINIMUM ON THE TRANSFER SIDE.

SECTION 604.6 - FLUSH CONTROLS SHALL BE HAND OPERATED OR AUTOMATIC. HAND OPERATED FLUSH CONTROLS SHALL COMPLY WITH SECTION 309. FLUSH CONTROLS SHALL BE LOCATED ON THE OPEN SIDE OF THE WATER CLOSET.

SECTION 604.7 - TOILET PAPER DISPENSERS SHALL COMPLY WITH SECTION 309.4 AND SHALL BE 7 MIN. AND AND 9 INCHES MAX. IN FRONT OF THE WATER CLOSET MEASURED TO THE CENTERLINE OF THE DISPENSER. THE OUTLET OF THE DISPENSER SHALL BE 15 INCHES MIN. AND 48 INCHES MAX. ABOVE THE FLOOR, AND SHALL NOT BE LOCATED BEHIND THE GRAB BARS. DISPENSERS SHALL NOT BE OF A TYPE THAT CONTROL DELIVERY, OR DO NOT ALLOW A CONTINUOUS PAPER FLOW.

SECTION 606.2 LAVATORIES - A CLEAR FLOOR SPACE COMPLYING WITH SECTION 305.3 (30" x 48"), POSITIONED FOR FORWARD APPROACH, SHALL BE PROVIDED. KNEE AND TOE CLEARANCE COMPLYING WITH SECTION 306 SHALL ALSO BE PROVIDED.

SECTION 304.3.1 - THE TURNING SPACE SHALL BE A CIRCULAR SPACE WITH A 60 INCH MINIMUM DIAMETER. THE TURNING SPACE SHALL BE PERMITTED TO INCLUDE KNEE AND TOE CLEARANCE COMPLYING WITH SECTION 306.

SECTION 305.3 - THE CLEAR FLOOR SPACE SHALL BE 48 INCHES MINIMUM IN LENGTH AND 30 INCHES MINIMUM IN WIDTH.

SECTION 306.1 - WHERE SPACE BENEATH AN ELEMENT IS INCLUDED AS PART OF CLEAR FLOOR SPACE AT AN ELEMENT, CLEARANCE AT AN ELEMENT, OR A TURNING SPACE, THE SPACE SHALL COMPLY WITH SECTION 306. ADDITIONAL SPACE BEYOND KNEE AND TOE CLEARANCES SHALL BE PERMITTED BENEATH ELEMENTS.

DISCLAIMER

THIS DIAGRAM IS INTENDED ONLY AS A GUIDE. BRUCE J. SPIEWAK DOES NOT WARRANT THAT THIS DIAGRAM WILL ENSURE CODE COMPLIANCE IN ANY SPECIFIC INSTALLATION

BRUCE J. SPIEWAK A.I.A.
CONSULTING ARCHITECT L.L.C.
375 MORGAN LANE UNIT 405
WEST HAVEN, CT 06516
PH. (203) 931-9945
FAX (203) 932-2355

PLAN: ICC/ANSI A117.1 - 2003
COMMERCIAL ACCESSIBLE
RESTROOM

DRAWN BY: C BARAN

DRAWING: SK - 3.1
Through SK - 3.6

SCALE: 1/2" = 1'-0"

SEPTEMBER 28,
2009

SECTION 306.2.1 - SPACE BENEATH AN ELEMENT BETWEEN THE FLOOR AND 9 INCHES ABOVE THE FLOOR SHALL BE CONSIDERED TOE CLEARANCE AND SHALL COMPLY WITH SECTION 306.2

SECTION 306.2.2 - TOE CLEARANCE SHALL BE PERMITTED TO EXTEND 25 INCHES MAXIMUM UNDER AN ELEMENT.

SECTION 306.2.3 - WHERE TOE CLEARANCE IS REQUIRED AT AN ELEMENT AS PART OF A CLEAR FLOOR SPACE. THE TOE CLEARANCE SHALL EXTEND 17 INCHES MINIMUM BENEATH THE ELEMENT.

SECTION 306.2.4 - SPACE EXTENDING GREATER THAN 6 INCHES BEYOND THE AVAILABLE KNEE CLEARANCES AT 9 INCHES ABOVE THE FLOOR SHALL NOT BE CONSIDERED TOE CLEARANCE.

SECTION 306.2.5 - TOE CLEARANCE SHALL BE 30 INCHES MINIMUM IN WIDTH.

SECTION 306.3.1 - SPACE BENEATH AN ELEMENT BETWEEN 9 INCHES AND 27 INCHES ABOVE THE FLOOR SHALL BE CONSIDERED KNEE CLEARANCE AND SHALL COMPLY WITH SECTION 306.3

SECTION 306.3.2 - KNEE CLEARANCE SHALL BE PERMITTED TO EXTEND 25 INCHES MAXIMUM UNDER AN ELEMENT AT 9 INCHES ABOVE THE FLOOR.

SECTION 306.3.3 - WHERE KNEE CLEARANCE IS REQUIRED BENEATH AN ELEMENT AS PART OF A CLEAR FLOOR SPACE, THE KNEE CLEARANCE SHALL BE 11 INCHES MINIMUM IN DEPTH AT 9 INCHES ABOVE THE FLOOR, AND 8 INCHES MINIMUM IN DEPTH AT 27 INCHES ABOVE THE FLOOR.

SECTION 306.3.4 - BETWEEN 9 INCHES AND 27 INCHES ABOVE THE FLOOR, THE KNEE CLEARANCE SHALL BE PERMITTED TO BE REDUCED AT A RATE OF 1 INCH FOR EACH 6 INCHES IN HEIGHT.

SECTION 306.3.5 - KNEE CLEARANCE SHALL BE 30 INCHES MINIMUM IN WIDTH.

SECTION 404.2.3.1 - SWING DOORS SHALL HAVE MANEUVERING CLEARANCES COMPLYING WITH TABLE 404.2.3.1

2005 CONNECTICUT STATE BUILDING CODE AMENDMENTS

SECTION 1109.2.2.1 - WHERE ACCESSIBLE WATER CLOSET COMPARTMENTS OR SINGLE OCCUPANCY TOILET ROOMS ARE PROVIDED, THE COMPARTMENT OR ROOM DOORS SHALL HAVE A PULL HANDLE MOUNTED 6 INCHES FROM THE HINGE SIDE ON THE COMPARTMENT OR ROOM SIDE OF THE DOOR. THIS HANDLE SHALL BE BETWEEN 26 INCHES AND 36 INCHES FROM THE FLOOR AND SHALL MEET THE REQUIREMENTS OF SECTION 404.2.6 OF ICC/ANSI A117.1-2003.

EXCEPTION: COMPARTMENTS OR ROOMS WITH SELF-CLOSING, SELF-LATCHING DOORS.

SECTION 1109.2.3 - REQUIRED ACCESSIBLE TOILET ROOMS DESIGNED FOR SINGLE OCCUPANCY IN OTHER THAN GROUP R SHALL MEET THE REQUIREMENTS OF ICC/ANSI A117.1 - 2003. EACH SUCH ROOM SHALL CONTAIN BOTH TOILET AND LAVATORY, SHALL HAVE A LEVER HANDLE PRIVACY LOCKSET AND SHALL HAVE AN EMERGENCY CALL SYSTEM THAT ACTUATES A VISIBLE AND AUDIOIBLE ALARM IN A NORMALLY OCCUPIED AREA. AN ALARM PULL SWITCH SHALL BE PROVIDED WITHIN 3 FEET OF THE WATER CLOSET WITH A PULL CORD EXTENDING TO WITHIN 12 INCHES OF THE FLOOR. EMERGENCY INSTRUCTIONS SHALL BE PROVIDED AT THE OCCUPIED LOCATION.

SECTION 1109.2.4 - IN ADDITION TO GRAB BARS REQUIRED BY ICC/ANSI A117.1 - 2003, A SEPARATE, ADDITIONAL SWING GRAB BAR SHALL BE PROVIDED AT A MINIMUM OF ONE ACCESSIBLE TOILET LOCATION FOR EACH GENDER PER FLOOR WITHIN ANY NONEXEMPT BUILDING. SUCH ADDITIONAL GRAB BAR SHALL BE LOCATED THE SAME DISTANCE FROM THE WATER CLOSET CENTERLINE TO THE SIDE GRAB BAR, PARALLEL TO, OPPOSITE FROM AND AT THE SAME HEIGHT AS THE SIDE GRAB BAR, THE ADDITIONAL GRAB BAR SHALL BE FLOOR MOUNTED OR WALL MOUNTED, AND SHALL FIX OR LATCH FIRMLY IN PLACE WHEN IN USE. THIS MOUNTING HEIGHT OF THE REQUIRED REAR BAR MAY BE VARIED TO COORDINATE WITH THE SWING GRAB BAR. THE SWING GRAB BAR SHALL BE NOT LESS THAN 24 INCHES NOR MORE THAN 36 INCHES IN LENGTH, AND SHALL BE CAPABLE OF SWINGING AND STORING AGAINST THE WALL OR PARTITION WHEN NOT REQUIRED.

EXCEPTION: AREAS IN GROUPS E, R-1, R-2, R-3, AND I-3 NOT SERVING PUBLIC AND ADMINISTRATIVE FUNCTIONS.

DISCLAIMER

THIS DIAGRAM IS INTENDED ONLY AS A GUIDE. BRUCE J. SPIEWAK DOES NOT WARRANT THAT THIS DIAGRAM WILL ENSURE CODE COMPLIANCE IN ANY SPECIFIC INSTALLATION

**BRUCE J. SPIEWAK A.I.A.
CONSULTING ARCHITECT L.L.C.**
375 MORGAN LANE UNIT 405
WEST HAVEN, CT 06516
PH. (203) 931-9945
FAX (203) 932-2355

**PLAN: ICC/ANSI A117.1 - 2003
COMMERCIAL ACCESSIBLE
RESTROOM**

DRAWN BY: C BARAN

DRAWING: SK - 3.1
Through SK - 3.6

SCALE: 1/2" = 1'-0"

SEPTEMBER 28,
2009

2005 CONNECTICUT STATE BUILDING CODE AMENDMENTS

SECTION 1109.2.5 - THE CONTROLS TO OPERATE A FAUCET SHALL BE LOCATED NO MORE THAN 25 INCHES FROM THE FRONT FACE OF A LAVATORY, KITCHEN SINK, COUNTER, OR VANITY. AT LEAST ONE LAVATORY PER GENDER PER BATHROOM SHALL HAVE ITS FAUCET AND CONTROL LOCATED WITHIN 13 INCHES FROM THE FACE OF THE FIXTURE OR VANITY FRONT. LAVATORY FAUCETS ON ACCESSIBLE FIXTURES SHALL COMPLY WITH THE REQUIREMENTS OF ICC/ANSI A117.1-2003.

DISCLAIMER

THIS DIAGRAM IS INTENDED ONLY AS A GUIDE. BRUCE J. SPIEWAK DOES NOT WARRANT THAT THIS DIAGRAM WILL ENSURE CODE COMPLIANCE IN ANY SPECIFIC INSTALLATION

**BRUCE J. SPIEWAK A.I.A.
CONSULTING ARCHITECT L.L.C.**
375 MORGAN LANE UNIT 405
WEST HAVEN, CT 06516
PH. (203) 931-9945
FAX (203) 932-2355

**PLAN: ICC/ANSI A117.1 - 2003
COMMERCIAL ACCESSIBLE
RESTROOM**

DRAWN BY: C BARAN

DRAWING: SK - 3.1
Through SK - 3.6

SCALE: 1/2" = 1'-0"

SEPTEMBER 28,
2009