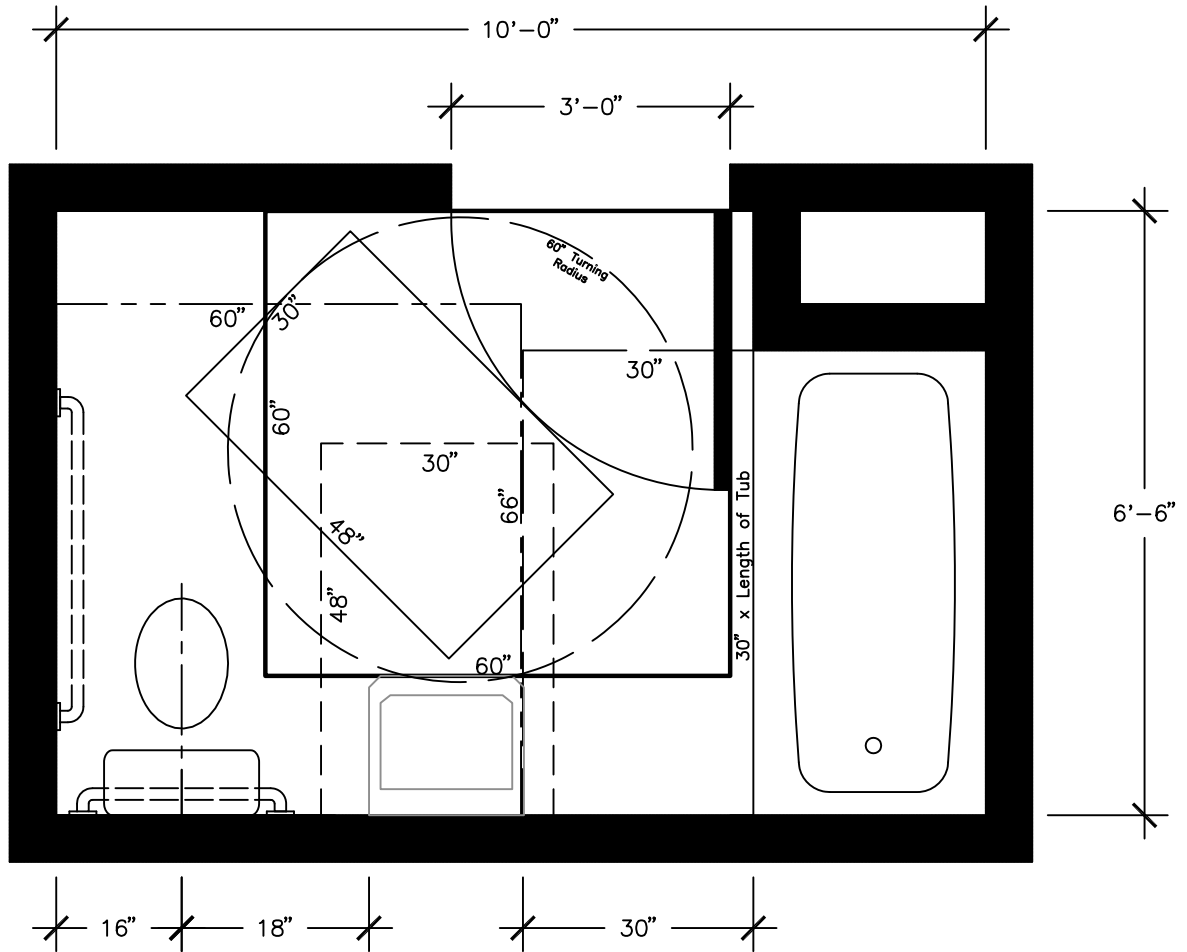








Type A Unit
Wall-Mounted Sink – Removable Cabinet

2016 CSBC ICC/ANSI A117.1 – 2009

JULY 12, 2018

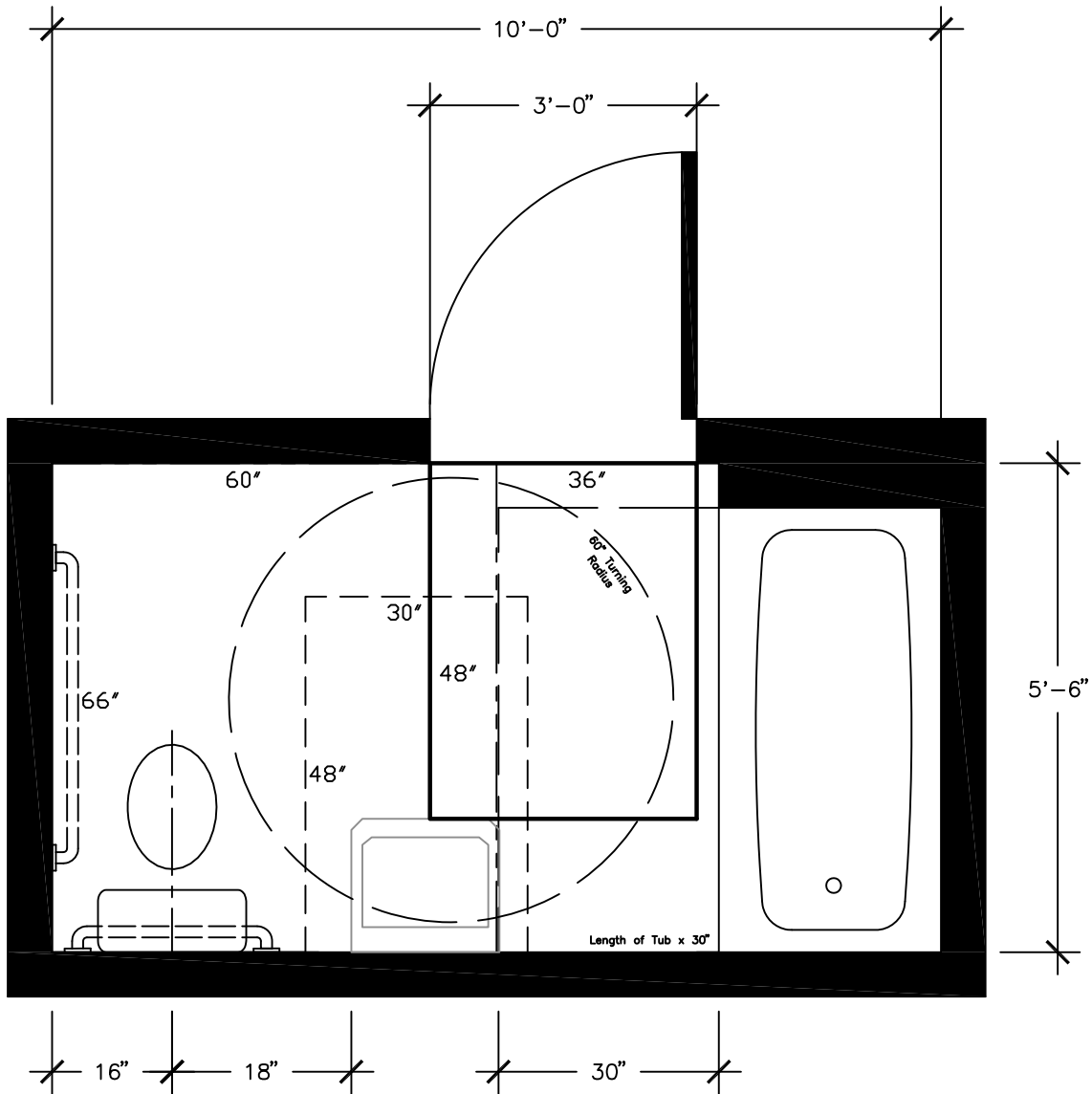


	<p><u>Maneuvering Clearances at Door</u> Front Approach Pull Side Sec. 1003.3.1/404.2.3.2 60" X (24" + 36")= 60" X 60"</p>
	<p><u>Toilet w/ Overlap</u> Sec. 1003.11.2.4.4 60" X 66"</p>
	<p><u>Lavatory</u>– Forward Approach Sec. 1003.11.2.2/606/305.3 30" X 48" (Removable Cabinet)</p>
	<p><u>Tub</u> Sec. 1003.11.2.5.1 Length of Tub X 30"</p>
	<p><u>Clear Floor Space</u> Sec.1003.11.2.1/305.3 30" X 48"</p>
	<p><u>Wheel Chair Turning Space</u> Sec. 1003.3.2/304 60" Circular Space</p>

Type A Unit
Wall-Mounted Sink – Removable Cabinet

2016 CSBC ICC/ANSI A117.1 – 2009

JULY 12, 2018

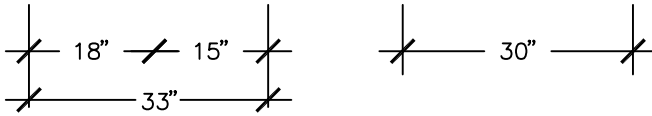
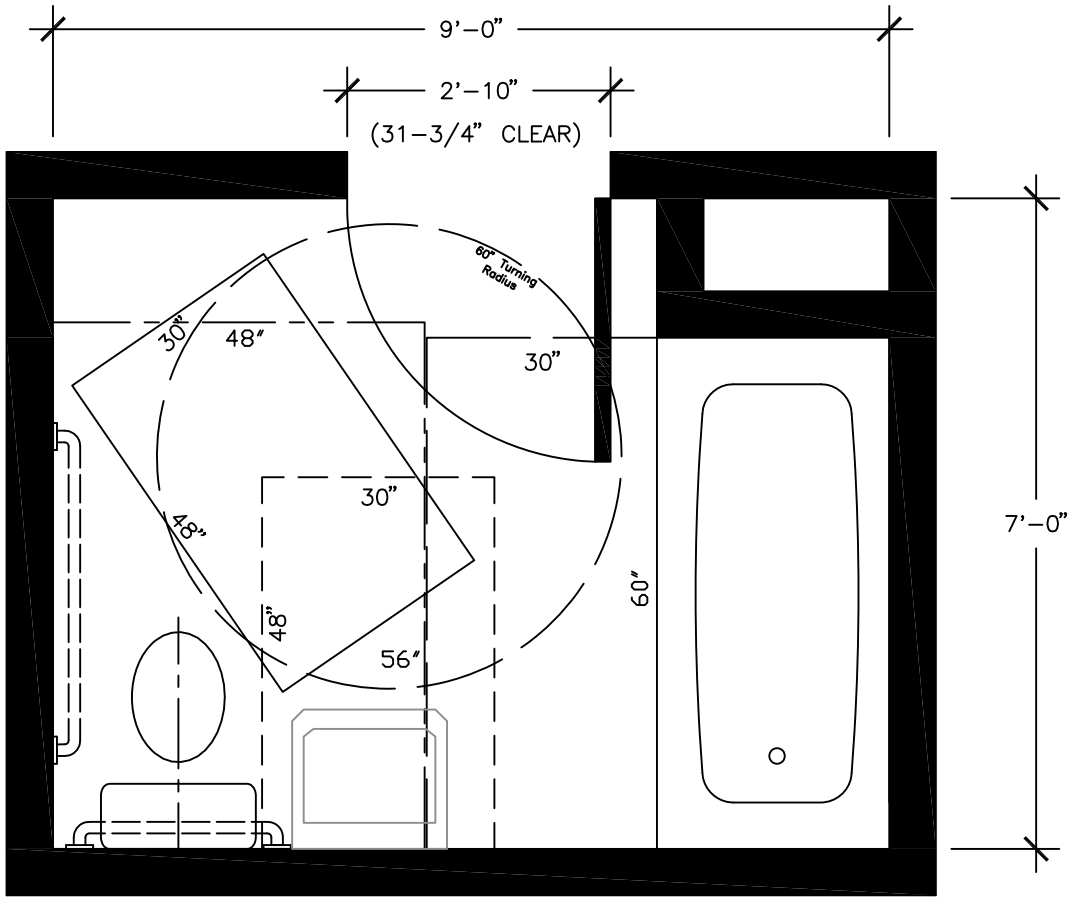


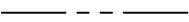




—————	<u>Maneuvering Clearances at Door</u> Front Approach Push Side Without Closer Sec. 1003.3.1/404.2.3.2 36" x 48"
- - - - -	<u>Toilet w/ Overlap</u> Sec. 1003.11.2.4.4 60" X 66"
- - - - -	<u>Lavatory— Forward Approach</u> Sec. 1003.11.2.2/606/305.3 30" X 48" (Removable Cabinet)
——— ———	<u>Tub</u> Sec. 1003.11.2.5.1 Length of Tub X 30"
——— ———	<u>Wheel Chair Turning Space</u> Sec. 1003.3.2/304 60" Circular

Type B Unit Option A & B
Wall-Mounted Sink – Removable Cabinet

2016 CSBC ICC/ANSI A117.1 – 2009

JULY 12, 2018

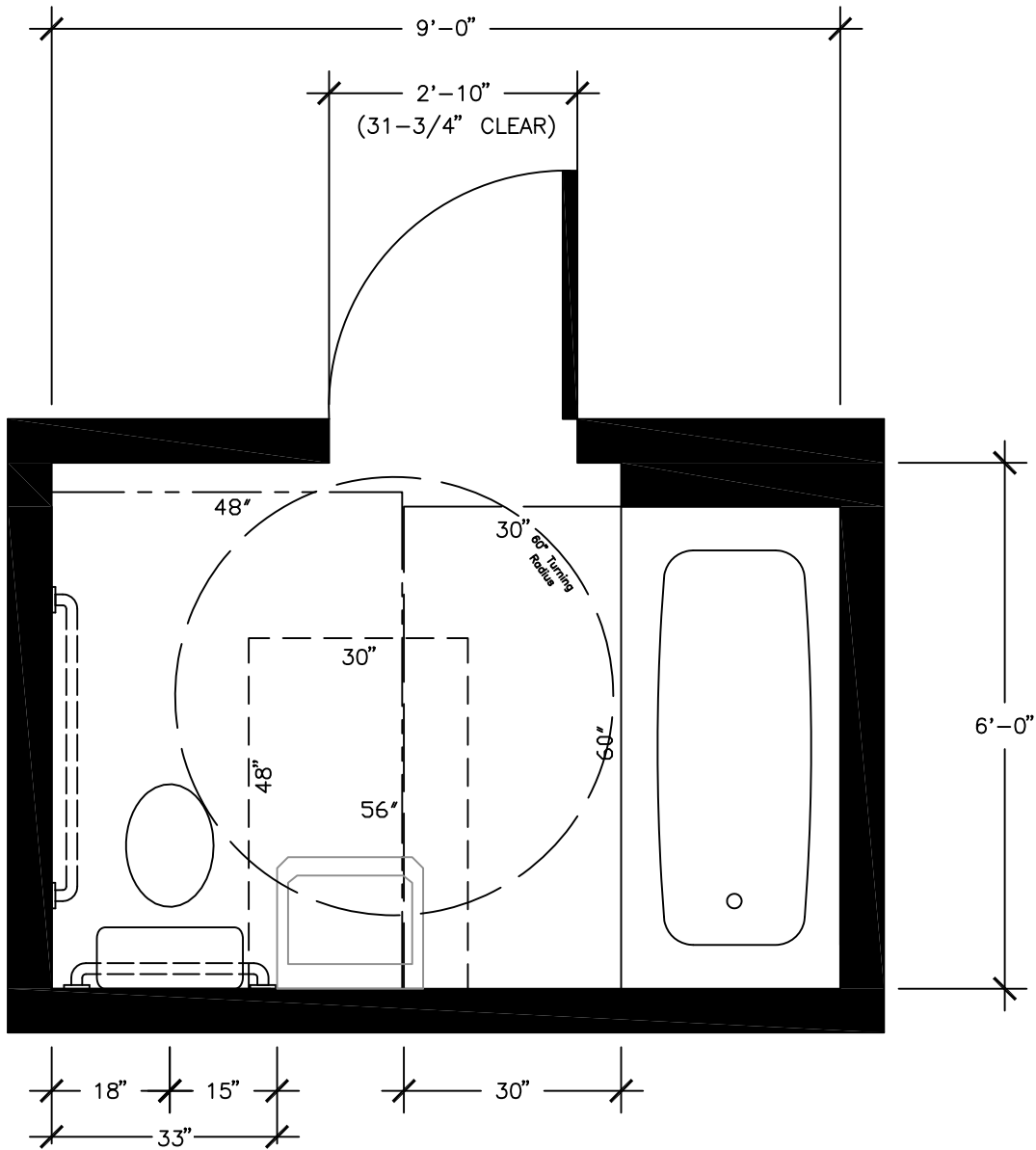


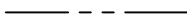
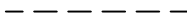


	<u>Water Closet</u> Parallel Approach With Overlap Sec.1004.11.3.1.2.1/1004.11.3.1.2.2.2/ 1004.11.3.1.2.2.4 56" X 48"
	<u>Lavatory</u> Forward Approach (Removable Cabinet) Sec. 1004.11.3.1.1/606/305.3 30" X 48"
	<u>Bathtub</u> Parallel Approach Sec. 1004.11.3.1.3.1 60" X 30"
	<u>Clear Floor Space</u> Sec. 1004.11.2/305.3 30" X 48"
	<u>Wheel Chair Turning Space</u> Sec. 1004.3.3/304 CT AMD 60" Circular

Type B Unit Option A & B
 Wall-Mounted Sink – Removable Cabinet

2016 CSBC ICC/ANSI A117.1 – 2009

JULY 12, 2018

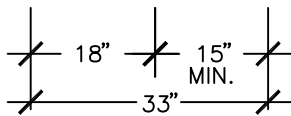
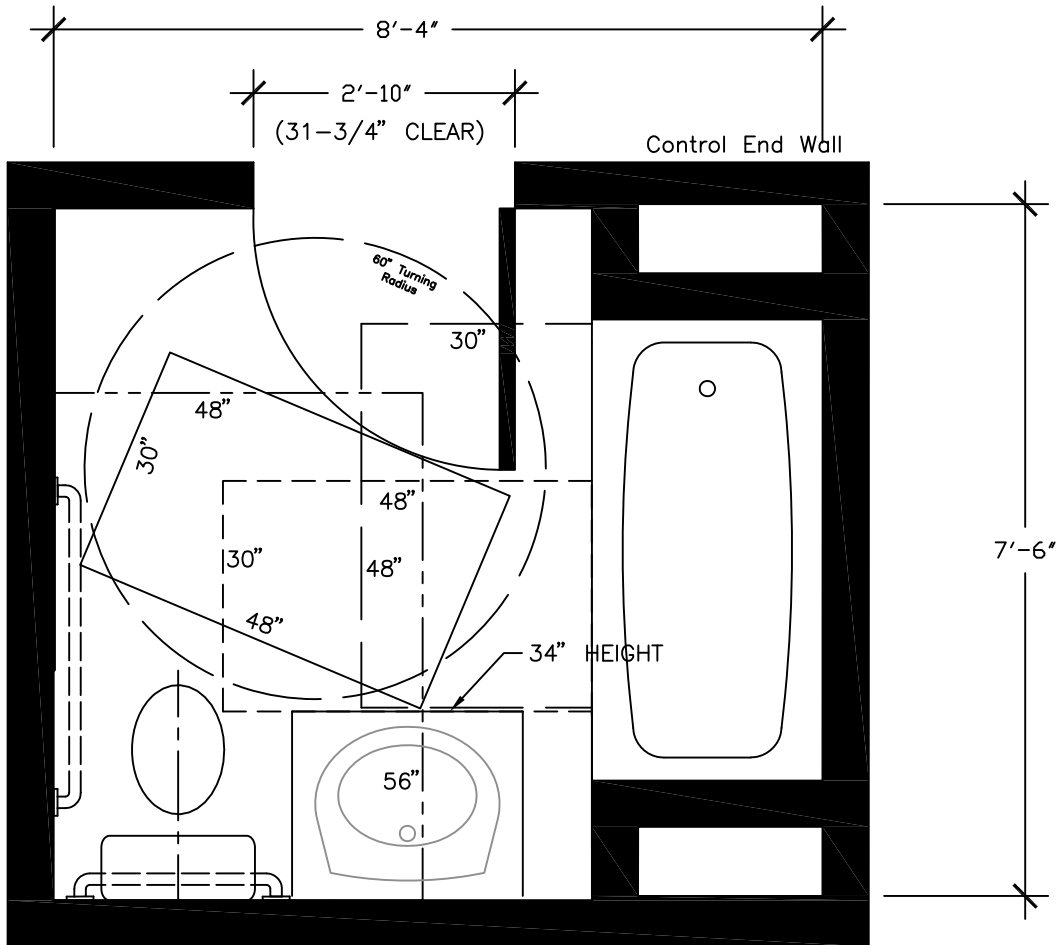







	<u>Water Closet</u> Parallel Approach With Overlap Sec.1004.11.3.1.2.1/1004.3.1.2.2.2/ 1004.11.3.1.2.2.4 56" X 48"
	<u>Lavatory</u> Forward Approach (Removable Cabinet) Sec. 1004.11.3.1.1/606/305.3 30" X 48"
	<u>Bathtub</u> Parallel Approach Sec. 1004.11.3.1.3.1 60" X 30"
	<u>Wheel Chair Turning Space</u> Sec. 1004.3.3/304 CT Amd. 60" Circular

Type B Unit Option B
Cabinet Sink – Fixed

2016 CSBC ICC/ANSI A117.1 – 2009

JULY 12, 2018

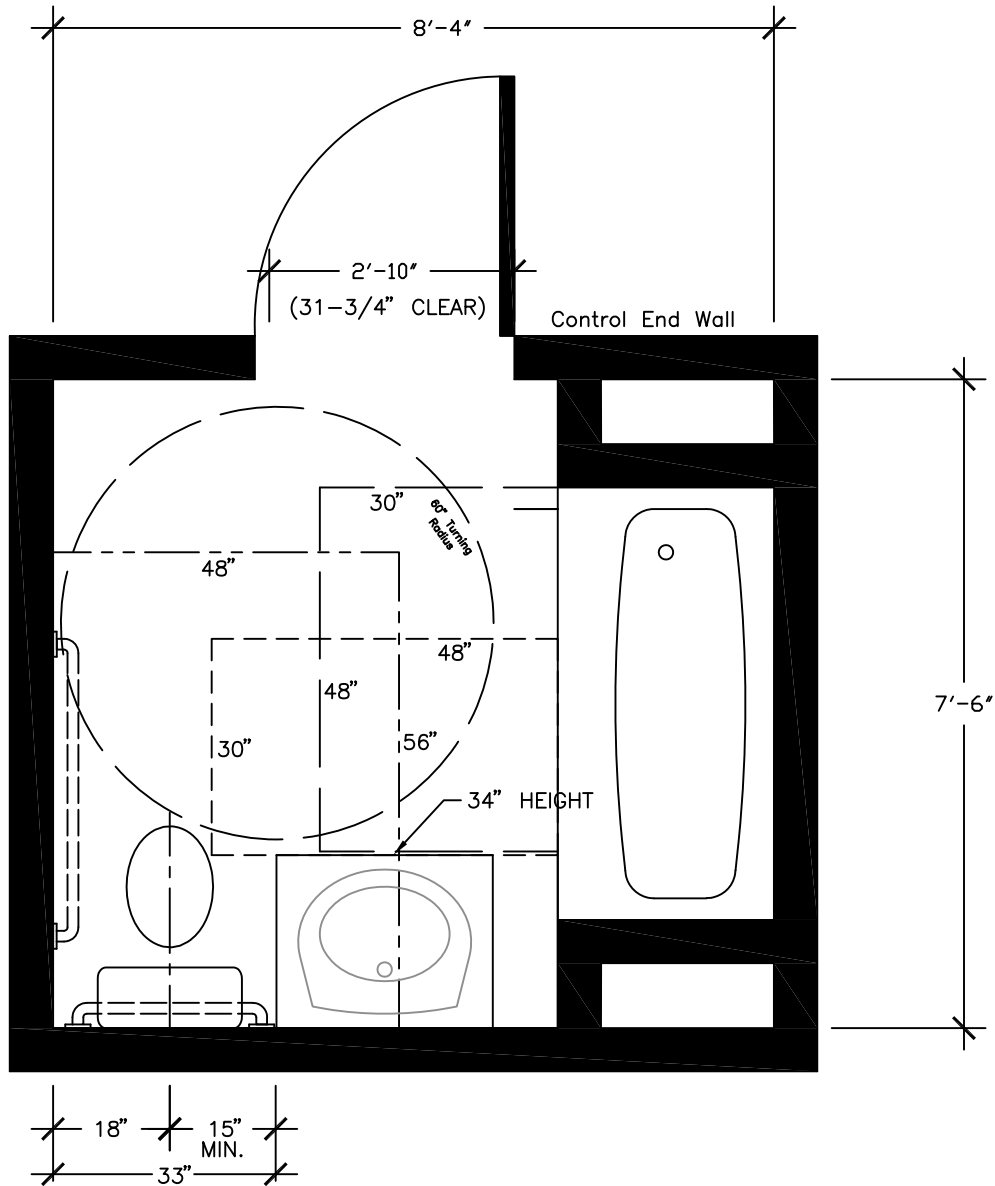


	<u>Water Closet</u> Parallel Approach Sec. 1004.11.3.2.2/1004.11.3.1.2/ 1004.11.3.1.2.2.4 56" X 48"
	<u>Lavatory</u> Parallel Approach Sec. 1004.11.3.1.1/305.3 30" X 48" Wide Centered (Fixed)
	<u>Bathtub</u> Parallel Approach Sec. 1004.11.3.2.3/1004.11.3.2.3.1 48" X 30"
	<u>Clear Floor Space</u> Sec. 1004.11.2/305.3 30" X 48"
	<u>Wheel Chair Turning Space</u> Sec. 1004.3.3/304 – CT Amd. 60" Circular

Type B Unit Option B
Cabinet Sink – Fixed

2016 CSBC ICC/ANSI A117.1 – 2009

JULY 12, 2018



- - - - -	<u>Water Closet</u> Parallel Approach Sec. 1004.11.3.2.2/1004.11.3.1.2/ 1004.11.3.1.2.2.4 56" X 48"
- - - - -	<u>Lavatory</u> Parallel Approach Sec. 1004.11.3.1.1/305.3 30" X 48" Wide Centered (Fixed)
- - - - -	<u>Bathtub</u> Parallel Approach Sec. 1004.11.3.2.3/1004.11.3.2.3.1 48" X 30"
()	<u>Wheel Chair Turning Space</u> Sec. 1004.3.3/304 – CT Amd. 60" Circular