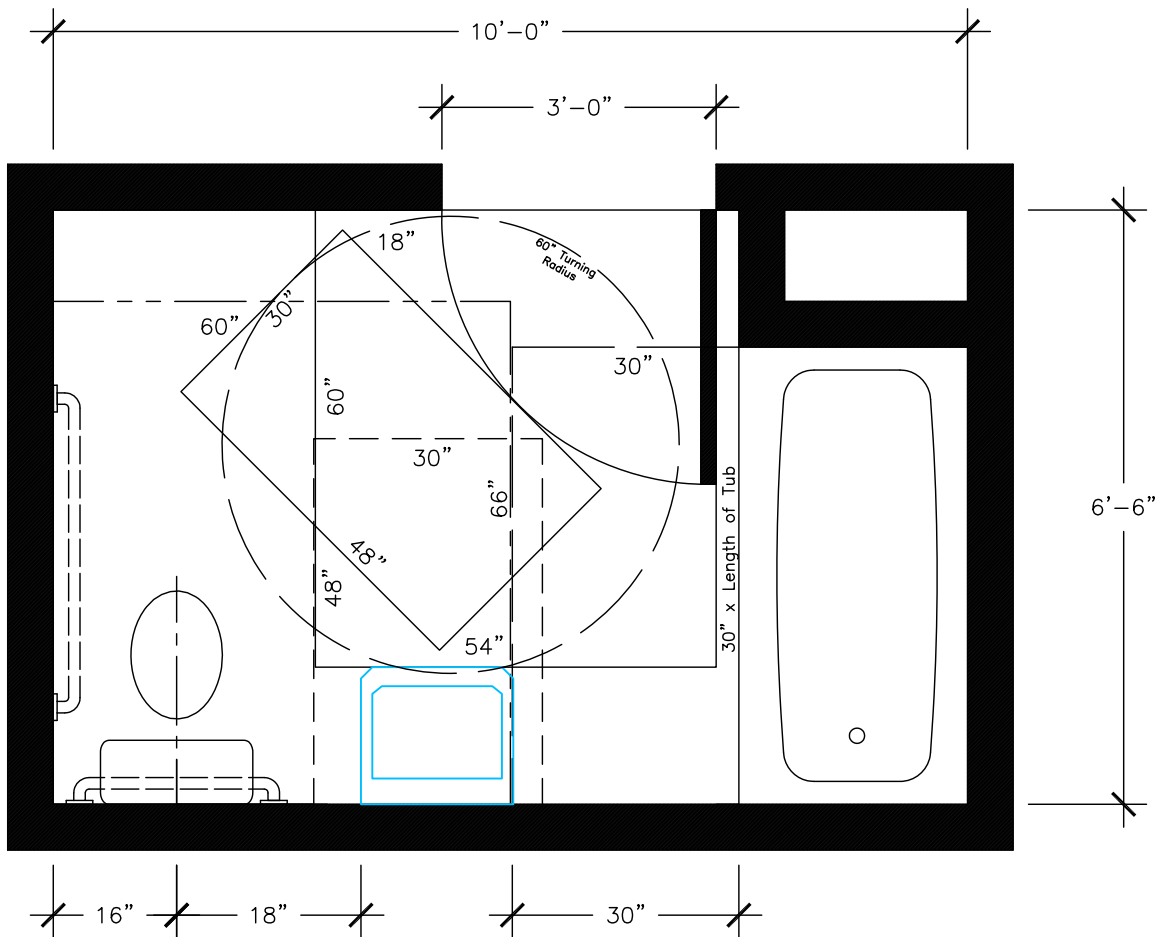


Type A Unit
Wall-Mounted Sink – Removable Cabinet

2018 CSBC ICC/ANSI A117.1 – 2009

SEPT. 2019

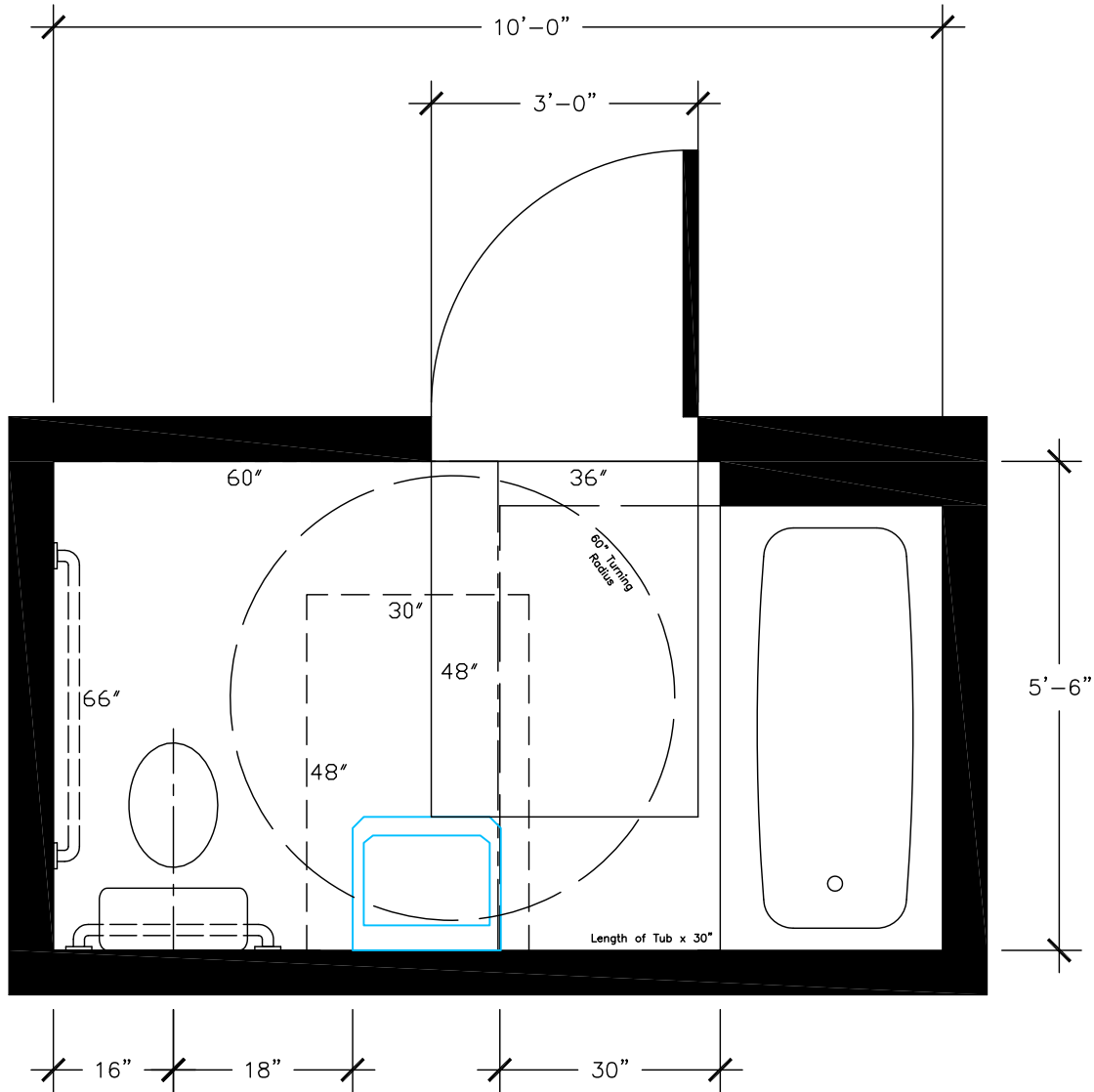





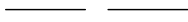

—————	<p><u>Maneuvering Clearances at Door</u> Front Approach Pull Side Sec. 1003.3.1/404.2.3.2/1003.5 60" X (18" + 36")= 60" X 54"</p>
- - - - -	<p><u>Toilet w/ Overlap</u> Sec. 1003.11.2.4.4 60" X 66"</p>
- - - - -	<p><u>Lavatory</u>– Forward Approach Sec. 1003.11.2.2/606/305.3 30" X 48" (Removable Cabinet)</p>
—————	<p><u>Tub</u> Sec. 1003.11.2.5.1/607 Length of Tub X 30"</p>
—————	<p><u>Clear Floor Space – Doors</u> Sec.1003.11.2.1/305.3 30" X 48"</p>
⌢	<p><u>Wheel Chair Turning Space</u> Sec. 1003.3.2/304/304.3 60" Circular Space</p>

Type A Unit
Wall-Mounted Sink – Removable Cabinet

2018 CSBC ICC/ANSI A117.1 – 2009

SEPT. 2019

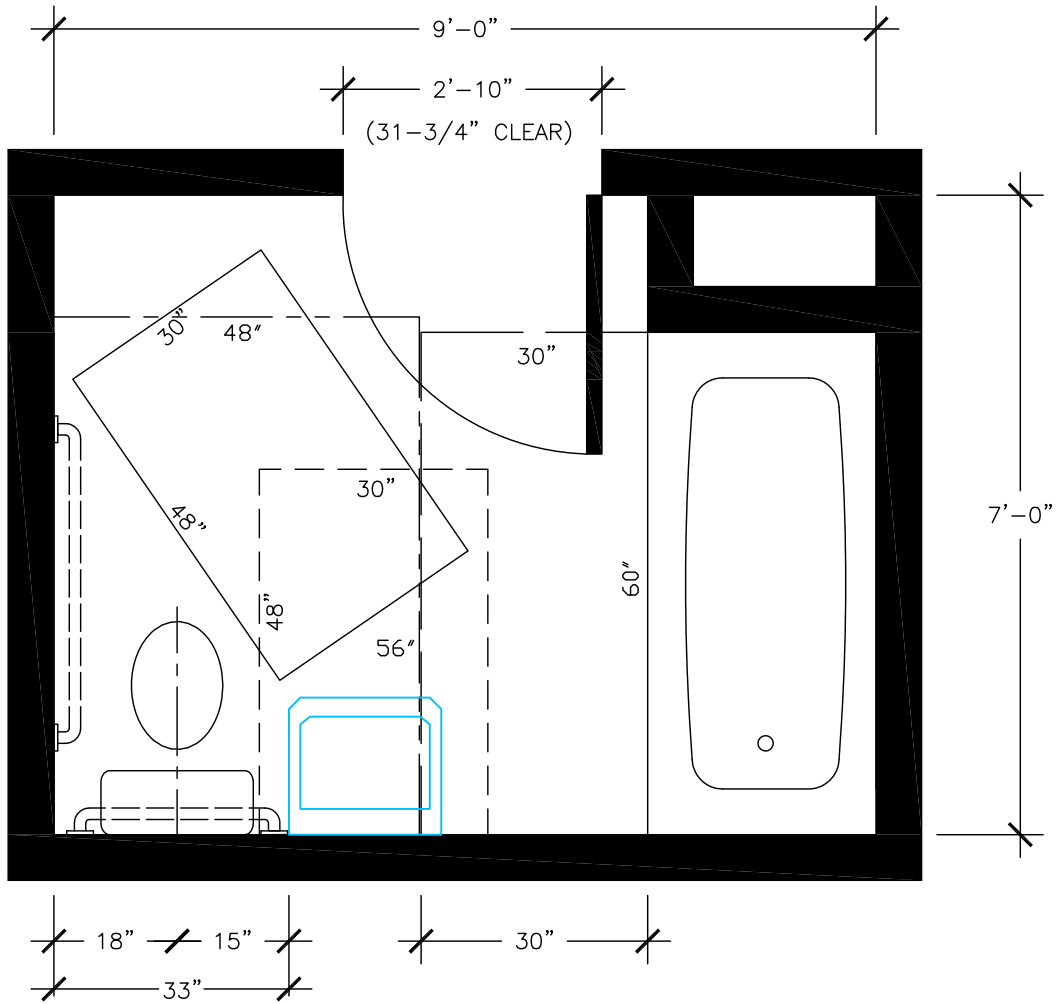


	<u>Maneuvering Clearances at Door</u> Front Approach Push Side Without Closer Sec. 1003.3.1/404.2.3.2/1003.5 36" x 48"
	<u>Toilet w/ Overlap</u> Sec. 1003.11.2.4.4 60" X 66"
	<u>Lavatory</u> – Forward Approach Sec. 1003.11.2.2/606/305.3 30" X 48" (Removable Cabinet)
	<u>Tub</u> Sec. 1003.11.2.5.1/607 Length of Tub X 30"
	<u>Wheel Chair Turning Space</u> Sec. 1003.3.2/304/304.3 60" Circular

Type B Unit Option A & B
 Wall-Mounted Sink – Removable Cabinet

2018 CSBC ICC/ANSI A117.1 – 2009

SEPT. 2019

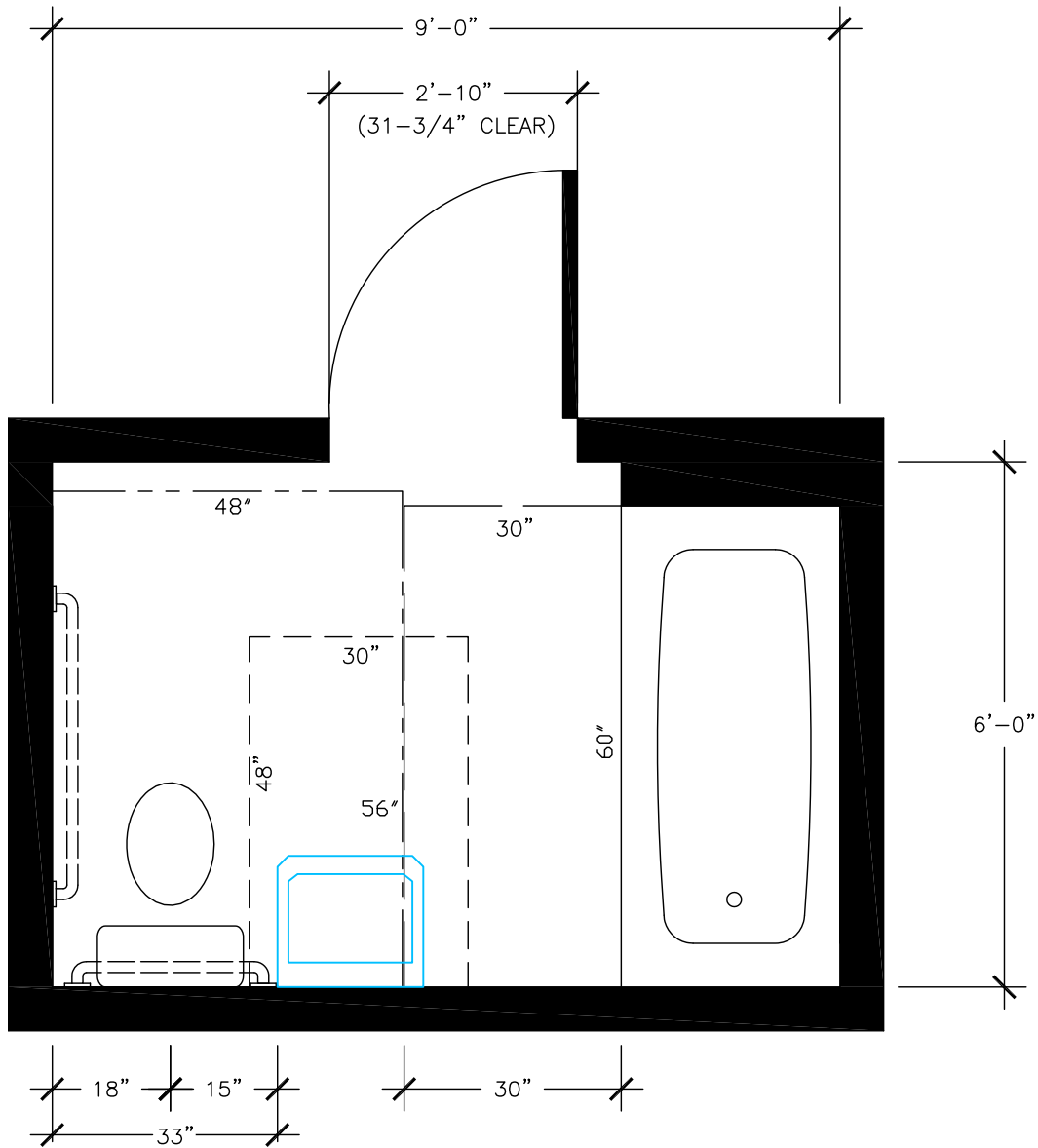



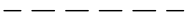
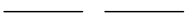
-----	<u>Water Closet</u> Parallel Approach With Overlap Sec.1004.11.3.1.2.1/1004.11.3.1.2.2.2/ 1004.11.3.1.2.2.4/1004.11.3.1.2.2.1 56" X 48"
-----	<u>Lavatory</u> Forward Approach (Removable Cabinet) Sec. 1004.11.3.1.1/606/305.3 30" X 48"
-----	<u>Bathtub</u> Parallel Approach Sec. 1004.11.3.1.3.1 60" X 30"
-----	<u>Clear Floor Space</u> Sec. 1004.11.2/305.3 30" X 48"

Type B Unit Option A & B
 Wall-Mounted Sink – Removable Cabinet

2018 CSBC ICC/ANSI A117.1 – 2009

SEPT. 2019



	<u>Water Closet</u> Parallel Approach With Overlap Sec.1004.11.3.1.2.1/1004.3.1.2.2.2/ 1004.11.3.1.2.2.4/1004.11.3.1.2.2.1 56" X 48"
	<u>Lavatory</u> Forward Approach (Removable Cabinet) Sec. 1004.11.3.1.1/606/305.3 30" X 48"
	<u>Bathtub</u> Parallel Approach Sec. 1004.11.3.1.3.1 60" X 30"